

## Diagnostic methods of extrapulmonary tuberculosis in a pediatric referral hospital

### Métodos diagnósticos en tuberculosis extrapulmonar en pediatría en un hospital de referencia pediátrico

**Supplementary Table 1. Diagnostic criteria for EPTB**

Parameter	Evaluation criteria
Microbiology	Isolation of <i>M. tuberculosis</i>
Biopsy	Specific granulomatous reaction
Immunological test (PPD*) Positive:	Induration (0 a 10 mm) <ul style="list-style-type: none"> <li>• &gt; 5 mm in immunodeficiency and malnutrition</li> <li>• &gt; 10 mm in all children with or without BCG vaccination</li> </ul>
Imaging	Suggestive imaging according to EPTB type
Clinical	Clinical manifestation according to EPTB type
Epidemiological	Close contact with an infectious TB active case

\*PPD (Purified Protein Derivate): Intradermal application of 2 tuberculin units of PPD RT-23. Reading at 48 and 72 hours. EPTB: extrapulmonary tuberculosis

**Supplementary Table 2. Clinical behavior according to predominant symptoms and signs**

Clinical behavior	Clinical manifestation
Constitutional syndrome	Clinical manifestation that indicates a generalized illness, included asthenia, involuntary weight loss (5% over 6 months), fever and fatigue
Specific symptoms	Clinical presentation with specific manifestations of an affected organ or system suggestive of tuberculosis.
Non-specific symptoms	Symptoms that do not correspond to any specific type of EPTB

EPTB: Extrapulmonary tuberculosis.

Supplementary Table 3. Age group and clinical criteria in participants

Age group	0 a 2	3 a 5	6 a 12	13 a 18	Total	p value
<b>n(% CI95%)</b>	<b>13 (20.3; 11.28-32.23)</b>	<b>10 (15.6; 7.76-26.86)</b>	<b>24 (37.5; 25.7-50.49)</b>	<b>17 (26.56; 16.3-39.09)</b>	<b>64</b>	
<i>Nutritional condition</i>						
Malnutrition	4 21.05% 30.77%	4 21.05% 40.00%	6 31.58% 25.00%	5 26.32% 29.41%	19 100.00% 29.69%	0.9546
Normal	7 18.42% 53.85%	5 13.16% 50.00%	15 39.47% 62.50%	11 28.95% 64.71%	38 100.00% 59.38%	
Risk of malnutrition	2 28.57% 15.38%	1 14.29% 10.00%	3 42.86% 12.50%	1 14.29% 5.88%	7 100.00% 10.94%	
Total	13 20.31% 100.00%	10 15.63% 100.00%	24 37.50% 100.00%	17 26.56% 100.00%	64 100.00% 100.00%	
<i>BCG vaccination</i>						
No	1 33.33% 7.69%	0 0.00% 0.00%	1 33.33% 4.17%	1 33.33% 5.88%	3 100.00% 4.69%	0.8439
Yes	12 19.67% 92.31%	10 16.39% 100.00%	23 37.70% 95.83%	16 26.23% 94.12%	61 100.00% 95.31%	
Total	13 20.31% 100.00%	10 15.63% 100.00%	24 37.50% 100.00%	17 26.56% 100.00%	64 100.00% 100.00%	
<i>TB contact</i>						
No	4 11.43% 30.77%	6 17.14% 60.00%	14 40.00% 58.33%	11 31.43% 64.71%	35 100.00% 54.69%	0.2689
Yes	9 31.03% 69.23%	4 13.79% 40.00%	10 34.48% 41.67%	6 20.69% 35.29%	29 100.00% 45.31%	
Total	13 20.31% 100.00%	10 15.63% 100.00%	24 37.50% 100.00%	17 26.56% 100.00%	64 100.00% 100.00%	
<i>PPD</i>						
Negative	5 23.81% 38.46%	7 33.33% 70.00%	6 28.57% 25.00%	3 14.29% 17.65%	21 100.00% 32.81%	0.0937
Not performed	1 14.29% 7.69%	1 14.29% 10.00%	4 57.14% 16.67%	1 14.29% 5.88%	7 100.00% 10.94%	
Positive	7 19.44% 53.85%	2 5.56% 20.00%	14 38.89% 58.33%	13 36.11% 76.47%	36 100.00% 56.25%	
Total	13 20.31% 100.00%	10 15.63% 100.00%	24 37.50% 100.00%	17 26.56% 100.00%	64 100.00% 100.00%	

<i>Ziehl Nelsen</i>						
Negative	7	4	5	2	18	
	38.89%	22.22%	27.78%	11.11%	100.00%	
	53.85%	40.00%	20.83%	11.76%	28.13%	
Not performed	4	2	10	10	26	
	15.38%	7.69%	38.46%	38.46%	100.00%	
	30.77%	20.00%	41.67%	58.82%	40.63%	
No report	1	0	4	3	8	
	12.50%	0.00%	50.00%	37.50%	100.00%	
	7.69%	0.00%	16.67%	17.65%	12.50%	
Positive	1	4	5	2	12	
	8.33%	33.33%	41.67%	16.67%	100.00%	
	7.69%	40.00%	20.83%	11.76%	18.75%	
Total	13	10	24	17	64	0.1114
	20.31%	15.63%	37.50%	26.56%	100.00%	
	100.00%	100.00%	100.00%	100.00%	100.00%	
<i>Culture</i>						
Negative	2	4	4	4	14	
	14.29%	28.57%	28.57%	28.57%	100.00%	
	15.38%	40.00%	16.67%	23.53%	21.88%	
Not performed	6	2	17	11	36	
	16.67%	5.56%	47.22%	30.56%	100.00%	
	46.15%	20.00%	70.83%	64.71%	56.25%	
No report	3	4	1	1	9	
	33.33%	44.44%	11.11%	11.11%	100.00%	
	23.08%	40.00%	4.17%	5.88%	14.06%	
Positive	2	0	2	1	5	
	40.00%	0.00%	40.00%	20.00%	100.00%	
	15.38%	0.00%	8.33%	5.88%	7.81%	
Total	13	10	24	17	64	0.0756
	20.31%	15.63%	37.50%	26.56%	100.00%	
	100.00%	100.00%	100.00%	100.00%	100.00%	
<i>Molecular biology test</i>						
Negative	3	2	0	1	6	
	50.00%	33.33%	0.00%	16.67%	100.00%	
	23.08%	20.00%	0.00%	5.88%	9.38%	
Not performed	7	6	18	10	40	
	17.07%	14.63%	43.90%	24.39%	100.00%	
	53.85%	60.00%	75.00%	58.82%	62.50%	
No report	1	1	5	4	11	
	9.09%	9.09%	45.45%	36.36%	100.00%	
	7.69%	10.00%	20.83%	23.53%	17.19%	
Positive	2	1	2	2	7	
	28.57%	14.29%	28.57%	28.57%	100.00%	
	15.38%	10.00%	8.33%	11.76%	10.94%	
Total	13	10	24	17	64	0.4639
	20.31%	15.63%	37.50%	26.56%	100.00%	
	100.00%	100.00%	100.00%	100.00%	100.00%	

<i>Confirmatory test</i>						
No	4 13.33% 30.77%	2 6.67% 20.00%	13 43.33% 54.17%	11 36.67% 64.71%	30 100.00% 46.88%	0.0739
Yes	9 26.47% 69.23%	8 23.53% 80.00%	11 32.35% 45.83%	6 17.65% 35.29%	34 100.00% 53.13%	
<i>Outcome</i>						0.1408
Cure	9 17.65% 69.23%	8 15.69% 80.00%	18 35.29% 75.00%	16 31.37% 94.12%	51 100.00% 79.69%	
Lose to follow-up	2 66.67% 15.38%	0 0.00% 0.00%	0 0.00% 0.00%	1 33.33% 5.88%	3 100.00% 4.69%	
Sequelae	2 20.00% 15.38%	2 20.00% 20.00%	6 60.00% 25.00%	0 0.00% 0.00%	10 100.00% 15.63%	
Total	13 20.31% 100.00%	10 15.63% 100.00%	24 37.50% 100.00%	17 26.56% 100.00%	64 100.00% 100.00%	

**Supplementary Table 4. Place of provenance of participants**

Place of provenance	Area type	Frecuency	%	CI95%	
Cartagena	Urban	48	75.00	62.60	84.98
Arjona	Rural	2	3.13	0.38	10.84
Mahates	Rural	2	3.13	0.38	10.84
Turbaco	Rural	2	3.13	0.38	10.84
Boca Cerrada	Rural	1	1.56	0.04	8.40
Clemencia	Rural	1	1.56	0.04	8.40
Coveñas	Rural	1	1.56	0.04	8.40
Magangué	Rural	1	1.56	0.04	8.40
Magdalena	Rural	1	1.56	0.04	8.40
San Cristóbal	Rural	1	1.56	0.04	8.40
San Estanislao	Rural	1	1.56	0.04	8.40
Santa Rosa	Rural	1	1.56	0.04	8.40
Tolú	Rural	1	1.56	0.04	8.40
Villanueva	Rural	1	1.56	0.04	8.40
Total		64	100.00		

The most origin was urban area (75%).

**Supplementary Table 5. Time from symptom onset to consultation date**

Time from onset of clinical manifestations to the date of consultation	Frecuency	%	Cumulative percentage	CI 95%	
Less than one month	31	48.44	48.44	35.75	61.27
1 to 3 months	13	20.31	68.75	11.2	32.23
3 to 6 months	11	17.19	85.94	8.90	28.68
Older than 12 months	6	9.38	95.31	3.52	19.30
6 to 12 months	3	4.69	100.00	0.98	13.09
Total	64	100.00	100.00		

More than half of the patients (68.75%) consulted 3 months after the onset of symptoms, which considerably delays timely diagnosis.

**Supplementary Table 6. Predominant clinical manifestations according to the type of EPTB**

Type of EPTB	Specific symptoms	Non-specific symptoms	Constitutional syndrome	TOTAL
Cerebral and Spondylolisthesis (Pott's Disease)	0	1	0	1
	0.00%	100.00%	0.00%	100.00%
	0.00%	5.26%	0.00%	1.56%
Cutaneous	4	0	0	4
	100.00%	0.00%	0.00%	100.00%
	10.26%	0.00%	0.00%	6.25%
Lymph node	26	6	0	32
	81.25%	18.75%	0.00%	100.00%
	66.67%	31.58%	0.00%	50.00%
Gastrointestinal	0	1	1	2
	0.00%	50.00%	50.00%	100.00%
	0.00%	5.26%	16.67%	3.13%
Miliary and mesenteric	0	1	0	1
	0.00%	100.00%	0.00%	100.00%
	0.00%	5.26%	0.00%	1.56%
Osteoarticular	3	0	1	4
	75.00%	0.00%	25.00%	100.00%
	7.69%	0.00%	16.67%	6.25%
Ovarian and peritoneal	0	0	1	1
	0.00%	0.00%	100.00%	100.00%
	0.00%	0.00%	16.67%	1.56%
Peritoneal	0	3	1	4
	0.00%	75.00%	25.00%	100.00%
	0.00%	15.79%	16.67%	6.25%
Renal and peritoneal	0	2	0	2
	0.00%	100.00%	0.00%	100.00%
	0.00%	10.53%	0.00%	3.13%
CNS	3	1	1	5
	60.00%	20.00%	20.00%	100.00%
	7.69%	5.26%	16.67%	7.81%
Pulmonary and Lymph node peritoneal	2	2	1	5
	40.00%	40.00%	20.00%	100.00%
	5.13%	10.53%	16.67%	7.81%
Pulmonary and Pleural	0	1	0	1
	0.00%	100.00%	0.00%	100.00%
	0.00%	5.26%	0.00%	1.56%
Pulmonary, cerebral and Tracheal	0	1	0	1
	0.00%	100.00%	0.00%	100.00%
	0.00%	5.26%	0.00%	1.56%
Bladder	1	0	0	1
	100.00%	0.00%	0.00%	100.00%
	2.56%	0.00%	0.00%	1.56%
Total	39	19	6	64
	60.94%	29.69%	9.38%	100.00%
	100.00%	100.00%	100.00%	100.00%

Specific clinical manifestations predominated in localized lymph node. EPTB: extrapulmonary tuberculosis.

Supplementary Table 7. Clinical manifestations according to age group and type of EPTB

Age group (years)	Type of EPTB											Total N%				
	Cerebral and Spondylo- listhesis	Cutaneous	Lymph node	Gastrointes- tinal	Miliary and mesenteric	Osteo- articular	Ovarian and peritoneal	Peritoneal	Renal and peritoneal	CNS	Pulmonary and lymph node perito- neal		Pulmonary and Pleural	Bladder		
0 a 2																
Seizures	0 0.00%	0 0.00%	0 0.00%	0 0.00%	0 0.00%	0 0.00%	0 0.00%	0 0.00%	0 0.00%	2 100.00%	0 0.00%	0 0.00%	0 0.00%	2 100.00%	15.38%	
Spinal deformity	0	0	0	0	0	0	0	0	0	0	0	0	0	0	0	0.00%
Respiratory distress	0	0	0	0	0	0	0	0	0	0	0	0	0	0	0	0.00%
Abdominal pain	0	0	0	0	0	0	0	0	0	0	0	0	0	0	0	0.00%
Fever	1 16.67% 100.00%	0 0.00% NaN	2 33.33% 33.33%	0 0.00% NaN	1 16.67% 100.00%	0 0.00% NaN	0 0.00% NaN	0 0.00% NaN	1 16.67% 100.00%	0 0.00% 0.00%	1 16.67% 50.00%	0 0.00% NaN	0 0.00% NaN	6 100.00% 46.15%		
Skin infection	0	0	0	0	0	0	0	0	0	0	0	0	0	0	0	0.00%
Mass in a location	0 0.00% 0.00%	0 0.00% NaN	4 100.00% 66.67%	0 0.00% NaN	0 0.00% 0.00%	0 0.00% NaN	0 0.00% NaN	0 0.00% NaN	0 0.00% 0.00%	0 0.00% 0.00%	0 0.00% 0.00%	0 0.00% NaN	0 0.00% NaN	4 100.00% 30.77%		
Mass in more than one location	0	0	0	0	0	0	0	0	0	0	0	0	0	0	0	0.00%
Constitutional syndrome	0 0.00% 0.00%	0 0.00% NaN	0 0.00% 0.00%	0 0.00% NaN	0 0.00% 0.00%	0 0.00% NaN	0 0.00% NaN	0 0.00% NaN	0 0.00% 0.00%	0 0.00% 0.00%	1 100.00% 50.00%	0 0.00% NaN	0 0.00% NaN	1 100.00% 7.69%		
Total	1 7.69% 100.00%	0 0.00% NaN	6 46.15% 100.00%	0 0.00% NaN	1 7.69% 100.00%	0 0.00% NaN	0 0.00% NaN	0 0.00% NaN	1 7.69% 100.00%	2 15.38% 100.00%	2 15.38% 100.00%	0 0.00% NaN	0 0.00% NaN	13 100.00% 100.00%		







**Supplementary Table 8. Imaging studies performed on participants**

Other imaging studies	n	%	Findings
Lymph node ultrasound	28	43.75	Lymph node: enlarged hypoechoic lymph nodes and cystic necrosis
CT scan of affected organs	19	29.69	<ul style="list-style-type: none"> <li>• Axillary and peritoneal lymph nodes: lymph nodes with peripheral thickening and central hypodense attenuation in more than one location</li> <li>• Ovarian: ovarian enlargement and irregularity with ascites</li> <li>• Bladder: caliectasia and bladder thickening</li> </ul>
Magnetic resonance imaging of affected organs	8	12.50	<ul style="list-style-type: none"> <li>• Cerebral and vertebral: ventriculomegaly and tuberculomas</li> <li>• Vertebral (Pott's disease): wedging of vertebral bodies and spondylodiscitis</li> </ul>
Soft tissue ultrasound	6	9.38	Lesion compatible with granuloma
Not performed	3	4.69	
TOTAL	64	100.00	

Imaging studies were ordered according to the type of TB. CT: computed tomography.

Supplementary Table 9. Culture results according to EPTB type in age groups.

Age group	0 a 2			3 a 5			6 a 12			13 a 18		
	Negative	Positive	Total n %	Negative	Positive	Total n %	Negative	Positive	Total n %	Negative	Positive	Total n %
Cerebral and Spondylolisthesis (Pott 'disease)	1 100.00%	0 0.00%	1 100.00%	0 NaN	0 NaN	0 0.00%	0 NaN	0 NaN	0 0.00%	0 NaN	0 NaN	0 NaN
Cutaneous	0 NaN	0 NaN	0 NaN	0 NaN	0 NaN	0 0.00%	0 NaN	0 NaN	0 NaN	2 66.67%	1 33.33%	3 100.00%
Ganglionic	1 100.00%	0 0.00%	1 100.00%	0 NaN	0 NaN	0 0.00%	2 66.67%	1 33.33%	3 100.00%	2 100.00%	0 0.00%	2 100.00%
Gastrointestinal	0 NaN	0 NaN	0 NaN	1 100.00%	0 0.00%	1 100.00%	0 NaN	0 NaN	0 0.00%	0 NaN	0 NaN	0 NaN
Miliary and mesenteric	0 0.00%	1 100.00%	1 100.00%	0 NaN	0 NaN	0 0.00%	0 NaN	0 NaN	0 NaN	0 NaN	0 NaN	0 NaN
Osteoarticular	0 NaN	0 NaN	0 NaN	0 NaN	0 NaN	0 0.00%	0 NaN	1 100.00%	1 100.00%	0 NaN	0 NaN	0 NaN
Peritoneal	0 NaN	0 NaN	0 NaN	1 100.00%	0 0.00%	1 100.00%	0 NaN	0 NaN	0 0.00%	0 NaN	0 NaN	0 NaN
Renal and peritoneal	0 0.00%	1 100.00%	1 100.00%	1 100.00%	0 0.00%	1 100.00%	0 NaN	0 NaN	0 NaN	0 NaN	0 NaN	0 NaN
CNS	0 NaN	0 NaN	0 NaN	0 NaN	0 NaN	0 0.00%	2 100.00%	0 0.00%	2 100.00%	0 NaN	0 NaN	0 NaN
Pulmonary and Lymph node peritoneal	0 NaN	0 NaN	0 NaN	1 100.00%	0 0.00%	1 100.00%	0 NaN	0 NaN	0 NaN	0 NaN	0 NaN	0 NaN
TOTAL N%	2 50.00%	2 50.00%	4 100.00%	4 100.00%	0 0.00%	4 100.00%	4 100.00%	2 33.33%	6 100.00%	4 80.00%	1 20.00%	5 100.00%

A variety of culture sample types was observed for the different types of EPTB (p = 1). Some data were not statistically significant (NaN). EPTB: extrapulmonary tuberculosis

Supplementary Table 10. Molecular biology test results according to TBE type in age groups in years.

Age group	0 a 2			3 a 5			6 a 12			13 a 18		
	Negative	Positive	Total n %	Negative	Positive	Total n %	Negative	Positive	Total n %	Negative	Positive	Total n %
Cerebral and Spondylolisthesis (Pott 'disease)	1 100.00% 33.33%	0 0.00% 0.00%	1 100.00% 20.00%	0 NaN 0.00%	NaN NaN 0.00%	0 NaN 0.00%	0 NaN NaN	0 NaN 0.00%	0 NaN 0.00%	0 NaN 0.00%	0 NaN 0.00%	0 NaN 0.00%
Cutaneous	0 NaN 0.00%	0 NaN 0.00%	0 NaN 0.00%	0 NaN 0.00%	NaN NaN 0.00%	0 NaN 0.00%	0 NaN NaN	0 NaN 0.00%	0 NaN 0.00%	0 NaN 0.00%	2 100.00% 100.00%	2 100.00% 66.67%
Ganglionar	1 100.00% 33.33%	0 0.00% 0.00%	1 100.00% 20.00%	0 NaN 0.00%	NaN NaN 0.00%	0 NaN 0.00%	0 NaN NaN	0 NaN 0.00%	0 NaN 0.00%	0 NaN 0.00%	0 NaN 0.00%	0 NaN 0.00%
Ovarian and peritoneal	0 NaN 0.00%	0 NaN 0.00%	0 NaN 0.00%	0 NaN 0.00%	NaN NaN 0.00%	0 NaN 0.00%	0 NaN NaN	0 NaN 0.00%	0 NaN 0.00%	1 100.00% 100.00%	0 NaN 0.00%	1 100.00% 33.33%
Peritoneal	0 NaN 0.00%	0 NaN 0.00%	0 NaN 0.00%	2 100.00% 100.00%	0 0.00% 0.00%	2 100.00% 66.67%	0 0.00% NaN	1 100.00% 50.00%	1 100.00% 50.00%	0 NaN 0.00%	0 NaN 0.00%	0 NaN 0.00%
Renal and peritoneal	1 100.00% 33.33%	0 0.00% 0.00%	1 100.00% 20.00%	0 NaN 0.00%	100.00% 100.00%	1 100.00% 33.33%	0 NaN NaN	1 100.00% 100.00%	0 NaN 0.00%	0 NaN 0.00%	0 NaN 0.00%	0 NaN 0.00%
CNS	0 0.00% 0.00%	2 100.00% 100.00%	2 100.00% 40.00%	0 NaN 0.00%	NaN NaN 0.00%	0 NaN 0.00%	0 NaN NaN	0 NaN 0.00%	0 NaN 0.00%	0 NaN 0.00%	0 NaN 0.00%	0 NaN 0.00%
Total N%	3 60.00% 100.00%	2 40.00% 100.00%	5 100.00% 100.00%	2 66.67% 100.00%	1 33.33% 100.00%	3 100.00% 100.00%	0 0.00% NaN	2 100.00% 100.00%	2 100.00% 100.00%	1 33.33% 100.00%	2 66.67% 100.00%	3 100.00% 100.00%
p value			0.4			0.3333			1			0.3333

Molecular biology testing was important in diagnosing EPTB in different age groups, especially in cases involving the central nervous system (CNS). There were no significant differences between age groups or diagnosis type. Some data were not statistically evaluable (NaN). EPTB: extrapulmonary tuberculosis

**Supplementary Table 11. Therapeutic regimen used in participants.**

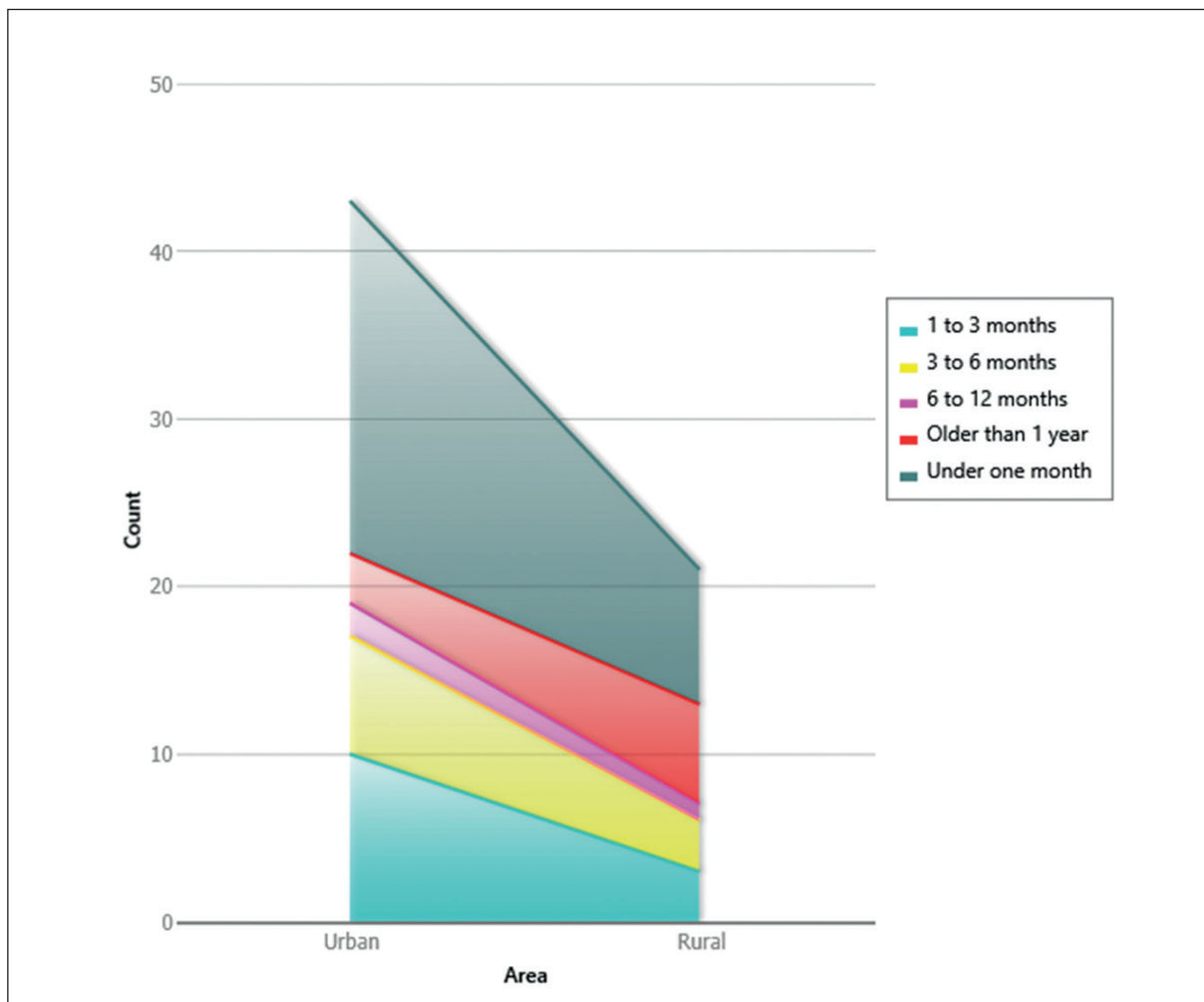
<b>Drugs</b>	<b>Intensive fase (2 months) Daily doses mg/Kg (dose range) ≤ 25 Kg</b>	<b>Intensive fase (2 months) Daily doses mg/Kg (dose range) ≥ 25 Kg</b>	<b>Second phase (4 months) Dose 3 times/week (Dose range) ≤ 25 Kg</b>	<b>Second phase (4 months) Dose 3 times/week (Dose range) ≥ 25 Kg</b>	<b>Maximum Daily Dose</b>
Isoniazid (H)	10 (7-15)	5 (4-6)	15 (7-15)	10 (8-12)	300 mg
Rifampin (R)	15 (10-20)	10 (8-12)	15 (10-20)	10 (8-12)	600 mg
Pyrazinamide (Z)	35 (30-40)	25 (20-30)			
Ethambutol (E)	20 (15-25)	15 (15-20)			

The treatment was carried out according to the recommendation of the Tuberculosis Control and Eradication Program in Colombia.

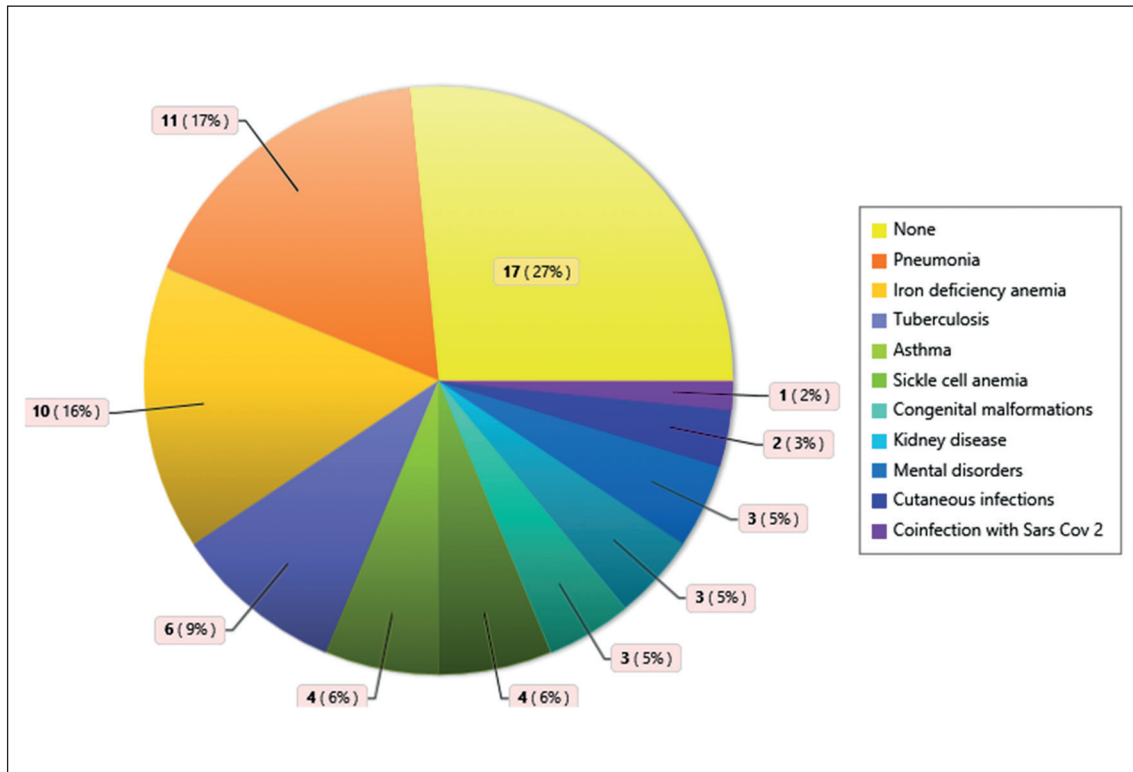
Supplementary Table 12. Outcome according to the type of EPTB

Type EPTB	Curación	Pérdida en el seguimiento	Secuela	Total
Cerebral and Spondylolisthesis (Pott 'disease)	1	0	0	1
	100.00%	0.00%	0.00%	100.00%
	1.96%	0.00%	0.00%	1.56%
Cutaneous	4	0	0	4
	100.00%	0.00%	0.00%	100.00%
	7.84%	0.00%	0.00%	6.25%
Ganglionar	30	2	0	32
	93.75%	6.25%	0.00%	100.00%
	58.82%	66.67%	0.00%	50.00%
Gastrointestinal	1	1	0	2
	50.00%	50.00%	0.00%	100.00%
	1.96%	33.33%	0.00%	3.13%
Miliary and mesenteric	1	0	0	1
	100.00%	0.00%	0.00%	100.00%
	1.96%	0.00%	0.00%	1.56%
Osteoarticular	0	0	4	4
	0.00%	0.00%	100.00%	100.00%
	0.00%	0.00%	40.00%	6.25%
Ovarian and peritoneal	1	0	0	1
	100.00%	0.00%	0.00%	100.00%
	1.96%	0.00%	0.00%	1.56%
Peritoneal	4	0	0	4
	100.00%	0.00%	0.00%	100.00%
	7.84%	0.00%	0.00%	6.25%
Renal and peritoneal	2	0	0	2
	100.00%	0.00%	0.00%	100.00%
	3.92%	0.00%	0.00%	3.13%
CNS	0	0	6	6
	0.00%	0.00%	100.00%	100.00%
	0.00%	0.00%	60.00%	9.38%
Pulmonary and Lymph node peritoneal	5	0	0	5
	100.00%	0.00%	0.00%	100.00%
	9.80%	0.00%	0.00%	7.81%
TBP y Pleural	1	0	0	1
	100.00%	0.00%	0.00%	100.00%
	1.96%	0.00%	0.00%	1.56%
Vesical	1	0	0	1
	100.00%	0.00%	0.00%	100.00%
	1.96%	0.00%	0.00%	1.56%
Total	51	3	10	64
	79.69%	4.69%	15.63%	100.00%
	100.00%	100.00%	100.00%	100.00%

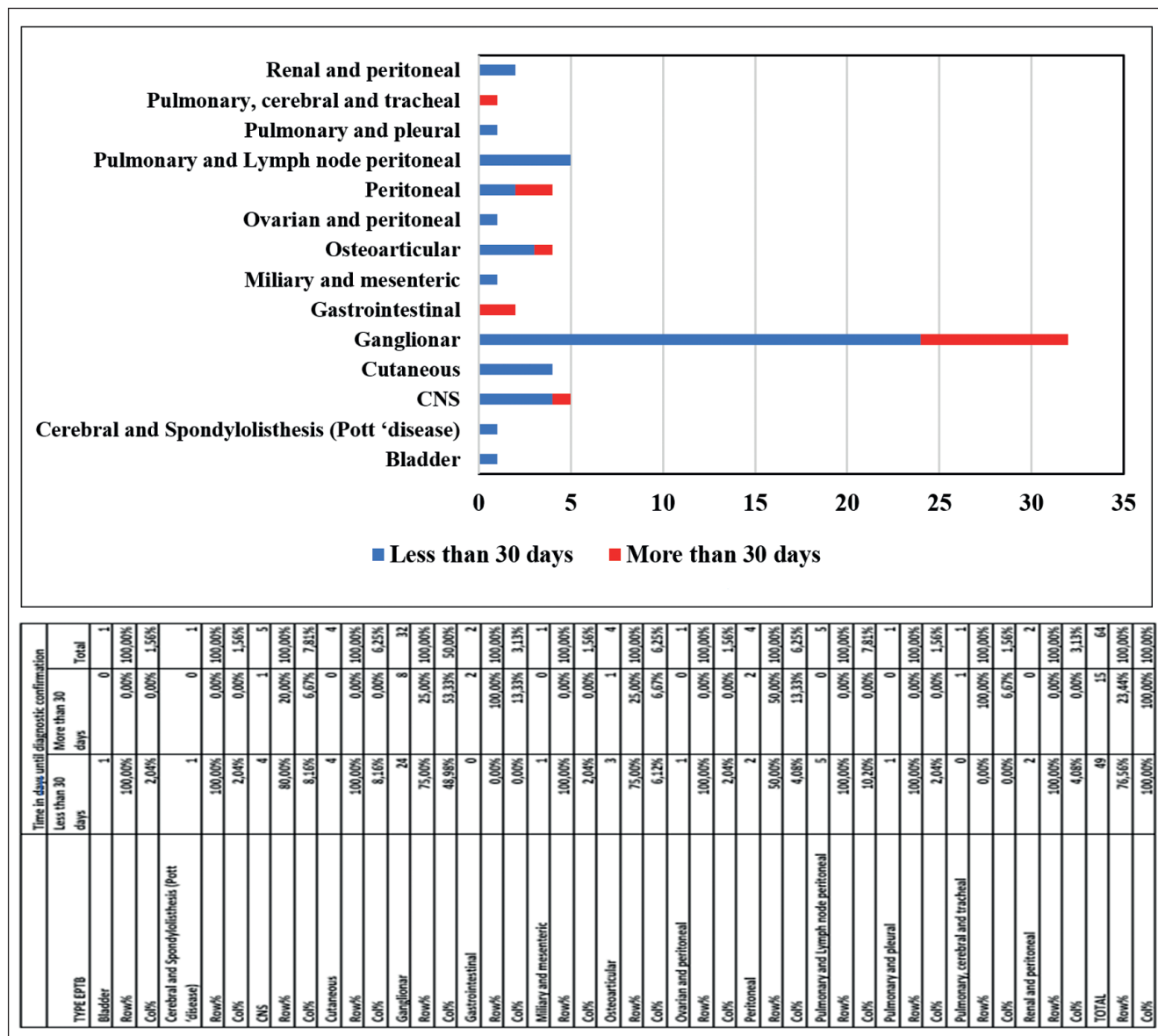
The sequelae were presented in bone and central nervous system tuberculosis.



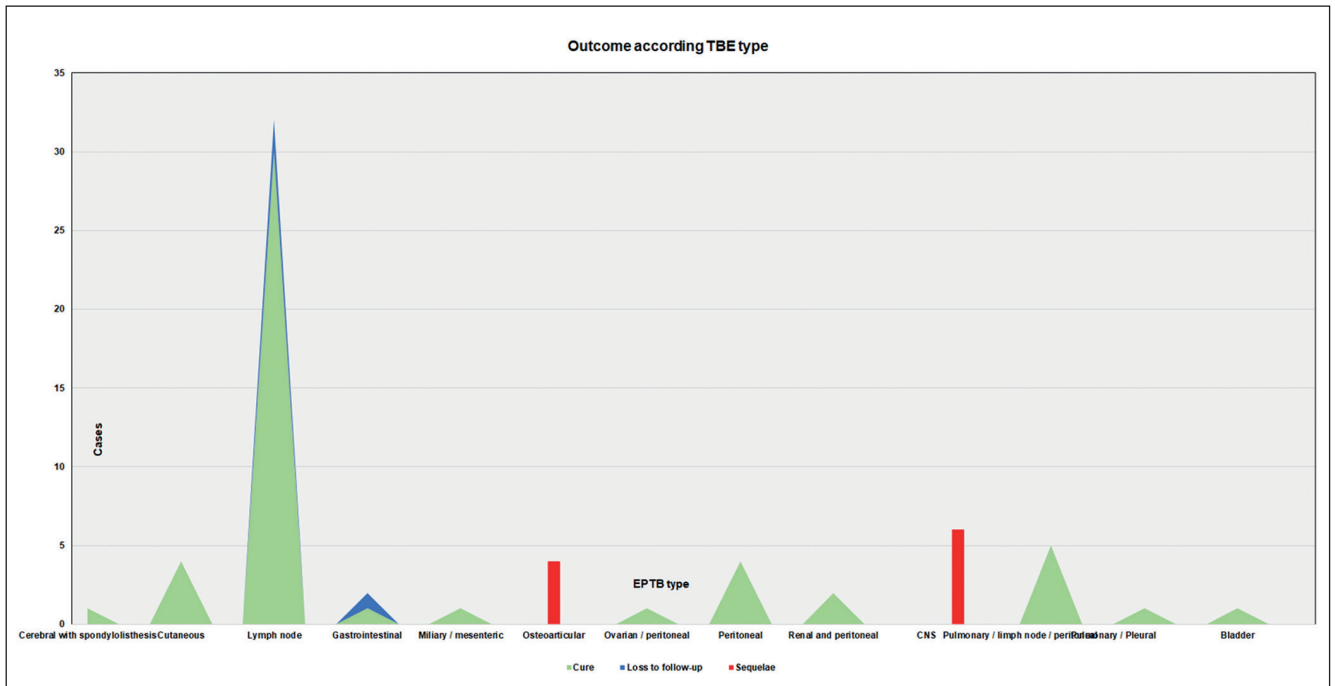
**Supplementary Figure 1.** Time from symptom onset to the date of consultation according to the area of origin. Patients in rural areas took longer to seek medical attention. This is influenced by the geographic distance from the specialist care provider.



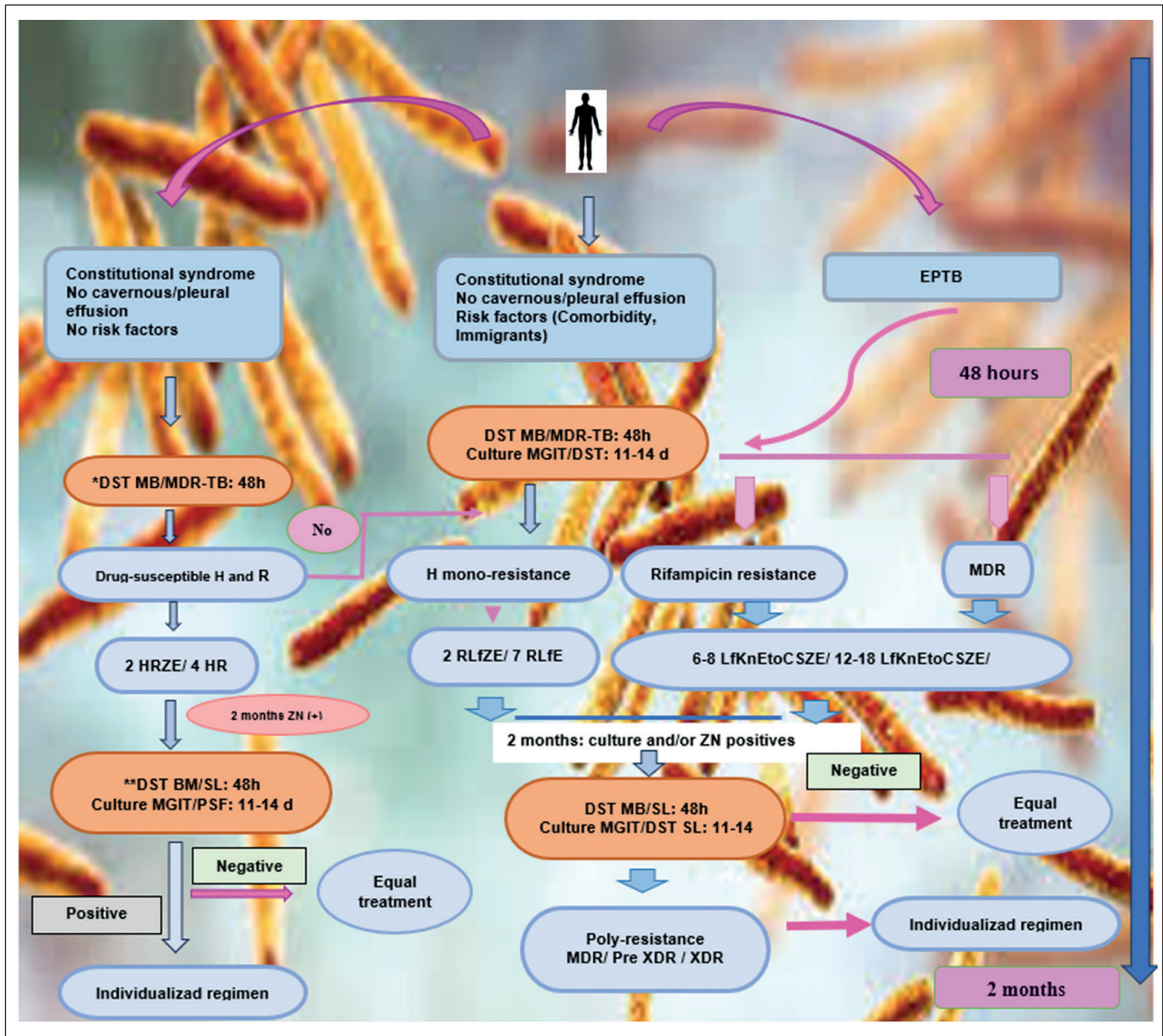
**Supplementary Figure 2.** Medical history of the participants. Pneumonia was the most common medical condition. Nine percent had previously treated pulmonary tuberculosis, and one case had coinfection with SARS-CoV-2.



**Supplementary Figure 3.** Diagnostic time according to type of EPTB. The time to diagnosis was longer in patients with deep solid tissue involvement. EPTB: extrapulmonary tuberculosis.



**Supplementary Figure 4.** Outcome according to type of EPTB. CNS (central nervous system) and osteoarticular were the most common causes of sequelae in participants. EPTB: extrapulmonary tuberculosis.



**Supplementary Figure 5.** Proposed diagnostic and management algorithm for extrapulmonary pulmonary tuberculosis. First-line drugs: H: isoniazid R: rifampicin Z: pyrazinamide E: ethambutol. Second-line drugs: Lf: levofloxacin Kn: kanamycin Eto: ethionamide C: capreomycin S: streptomycin MGIT: Mycobacterial Growth Indicator Tube. \*BM/MDR DST: molecular biology (BM) drug susceptibility testing for first-line antituberculosis drugs (isoniazid and rifampicin), which allows the identification of multidrug resistance (MDR). \*\*BM/SL DST: molecular biology (BM) drug susceptibility testing for second-line antituberculosis drugs (fluoroquinolones, aminoglycosides), which allows the identification of polydrug resistance (Pre-XDR) and extensive drug resistance (XDR). Patients with EPTB undergo rapid (48-hour) molecular biology (BM) FST for H and R, which allows for classification as sensitive and place first-line treatment or as resistant (mono-resistant to H, resistance to R or MDR-TB) and address it immediately with a regimen for resistance without having to wait the 2-month timeframe, as usually occurs in most cases. DST with BM to second-line (SL) drugs will be performed in cases of clinical or bacteriological suspicion and would also allow for individualized management regimens.